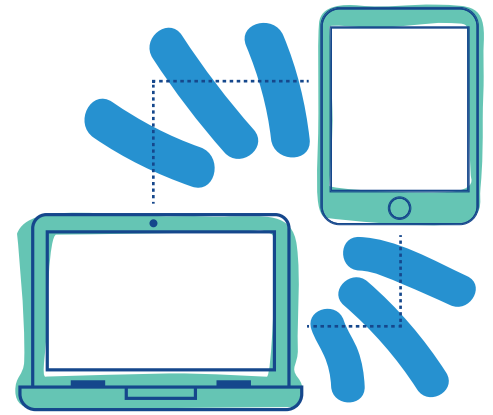


UK-Guest

WI-FI QUICKSTART GUIDE



How to Connect

- 1** Open your Wi-Fi settings & select **UK-Guest**.
- 2** If its your first time connecting, select **"I don't have a GUEST account."**
- 3** Enter your information to self register.
- 4** Agree to the Acceptable Use Policy (AUP) to be connected.

Reconnection

To connect another device or reconnect, refer to the credentials emailed or texted to you.

Wi-Fi Setup Instructions

Follow the instructions at its.uky.edu/wifihelp for additional help with Wi-Fi setup.

UK-Guest Group Access

Authorized UK faculty and staff may become sponsors for guest Wi-Fi access. This allows multiple guest accounts to be generated at one time. This is useful for events on campus that require Internet access for all attendees.

Learn more here: its.uky.edu/wifihelp/uk-guest

New Student Tech Tips

Important tech tips for incoming students at techhelpcenter.uky.edu/techtips

Still need help? We got you.

For urgent matters, call ITS Customer Services @ **859-218-HELP(4357)** 24/7

For non-urgent matters visit:
techhelpcenter.uky.edu

Fill out the Customer Services Assistance Request form here:
techhelpcenter.uky.edu/assistance.